



## 90 WHITECHAPEL HIGH STREET LONDON, E1 7RA

£2,500 PCM

Superb Two-Bedroom Flat in the Heart of Aldgate East, E1

Set within one of London's most vibrant and well-connected neighbourhoods, this superb second-floor flat offers an excellent opportunity for professionals and students seeking stylish living with exceptional access to the City, leading universities, and key business districts.

The flat features a generously proportioned living area with an open-plan kitchen and dining space, thoughtfully designed for both comfort and practicality. Large sash windows allow for an abundance of natural light, creating a bright and inviting atmosphere throughout. Both bedrooms are spacious doubles, ideal for sharers or couples in need of extra space. A notable highlight is the extensive hallway storage, complete with floor-to-ceiling wardrobes providing ample

**DouglasPryce**

### Whitechapel High Stree



Approximate Gross Internal Area  
90.4 sq m / 973 sq ft

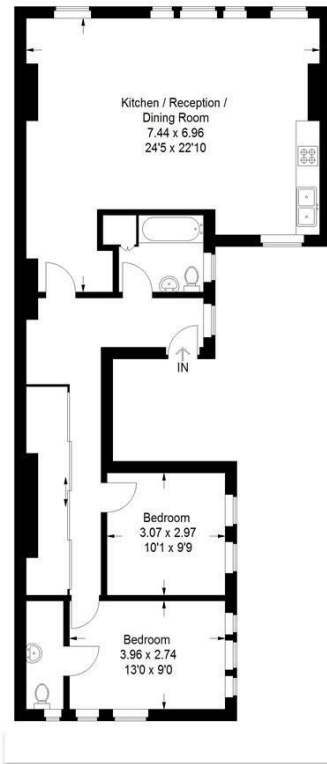


Illustration for identification purposes only, measurements are approximate.



Energy Efficiency Rating		Current	Potential
Very energy efficient - lower running costs			
(92 plus) A			
(81-91) B			
(69-80) C			
(55-68) D		60	76
(39-54) E			
(21-38) F			
(1-20) G			
Not energy efficient - higher running costs			
England & Wales		EU Directive 2002/91/EC	

Agents Note: Whilst every care has been taken to prepare these particulars, they are for guidance purposes only. All measurements are approximate and are for general guidance purposes only and whilst every care has been taken to ensure their accuracy, they should not be relied upon and potential buyers/tenants are advised to recheck the measurements

Lettings  
Verdant Lane  
London  
SE6 1LF

07887933642  
glenn@douglaspryce.co.uk  
www.douglaspryce.co.uk

**DouglasPryce**